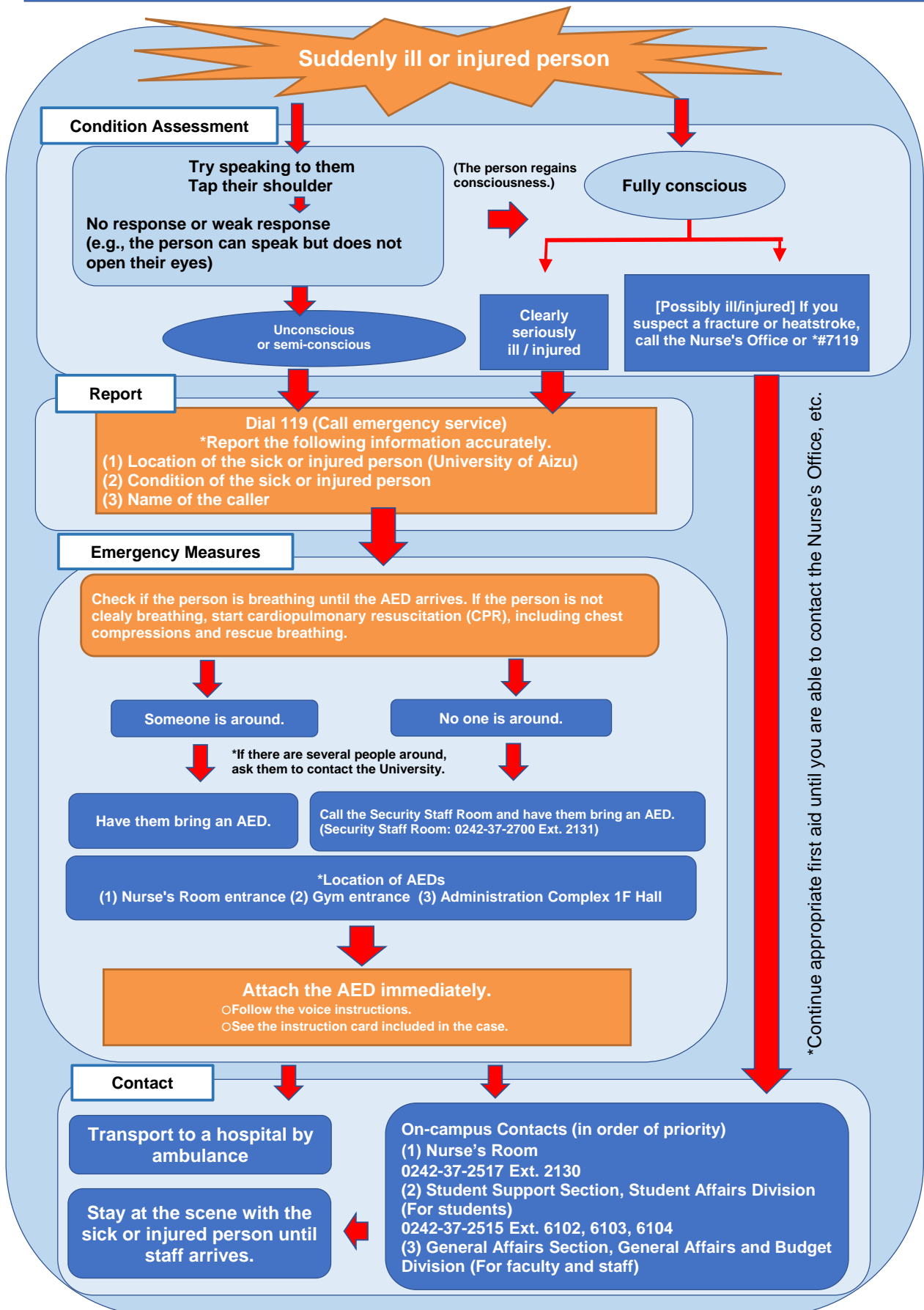


UoA Response Flowchart for Medical Emergencies and Injuries Weekday business hours [UoA Campus] (8:30 a.m. to 5:15 p.m.)



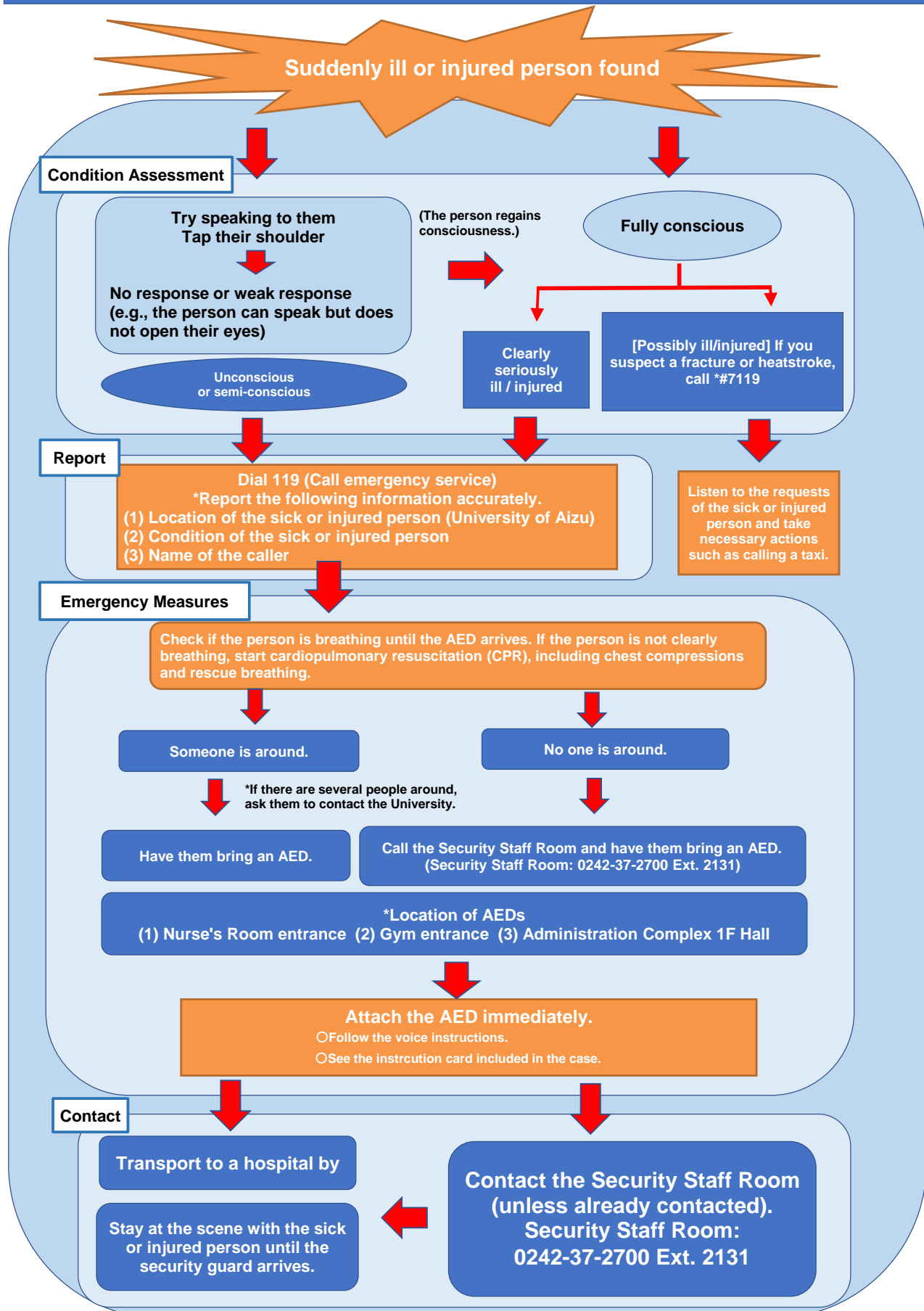
*This flowchart is intended for University faculty, staff, students, and contractors.

*If you experience any symptoms, please contact the University or visit the nearest hospital.

*#7119 is a call center which provides access to expert advice from medical professionals. (JP only)

UoA Response Flowchart for Medical Emergencies and Injuries

Weekday after-hours (5:15 p.m. to 8:30 a.m. next day) and holidays

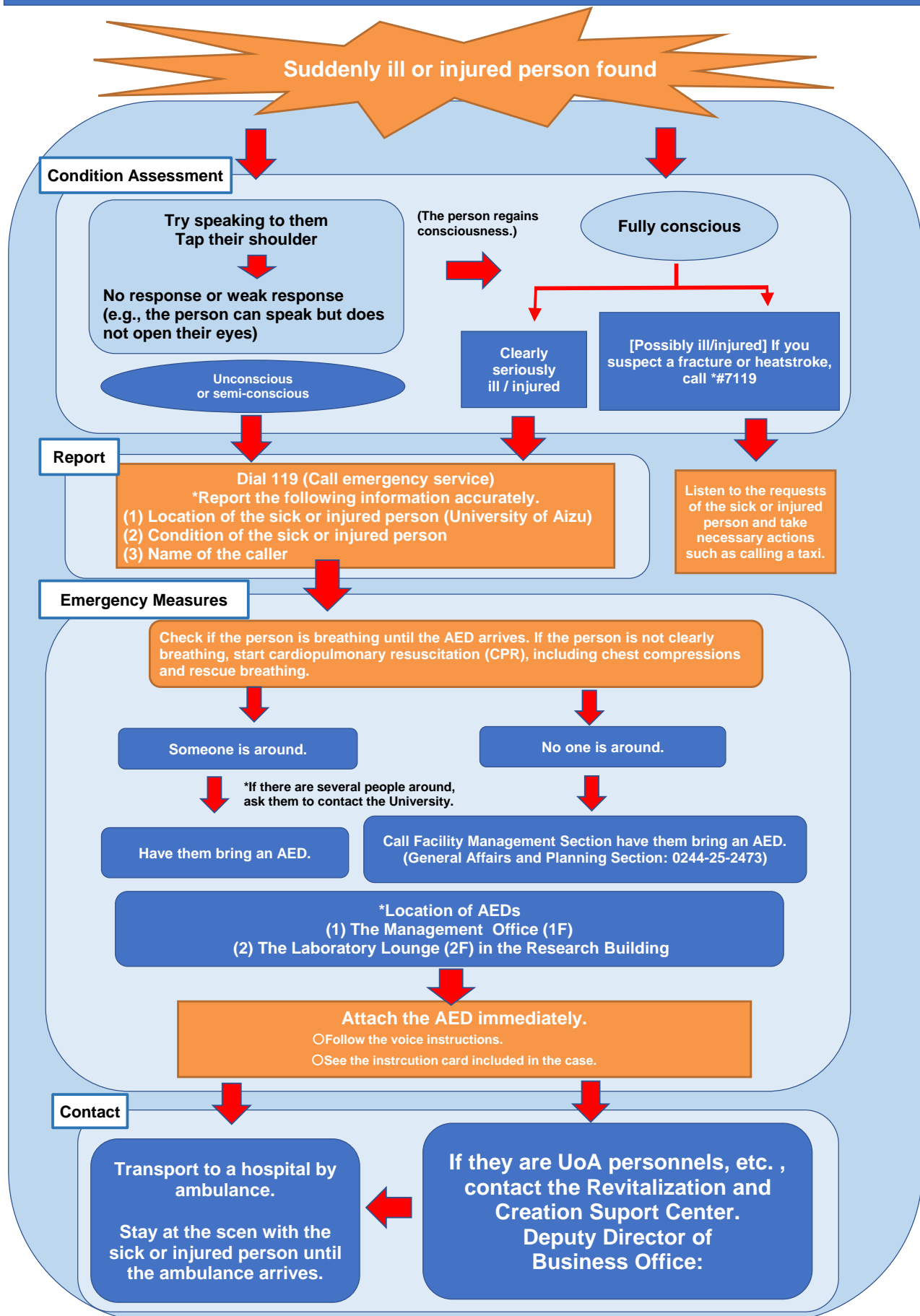


*This flowchart is intended for University faculty, staff, students, and contractors.

*If you experience any symptoms, please visit the nearest hospital.

*#7119 is a call center which provides access to expert advice from medical professionals. (JP only)

UoA Response Flowchart for Medical Emergencies and Injuries [Fukushima Robot Test Field]



*This flowchart is intended for University faculty, staff, students, and contractors.

*If you experience any symptoms, please visit the nearest hospital.

*#7119 is a call center which provides access to expert advice from medical professionals. (JP only)

HEARTSTART HS1 QUICK GUIDE PHILIPS

1 PULL the green handle (turn on HS1)

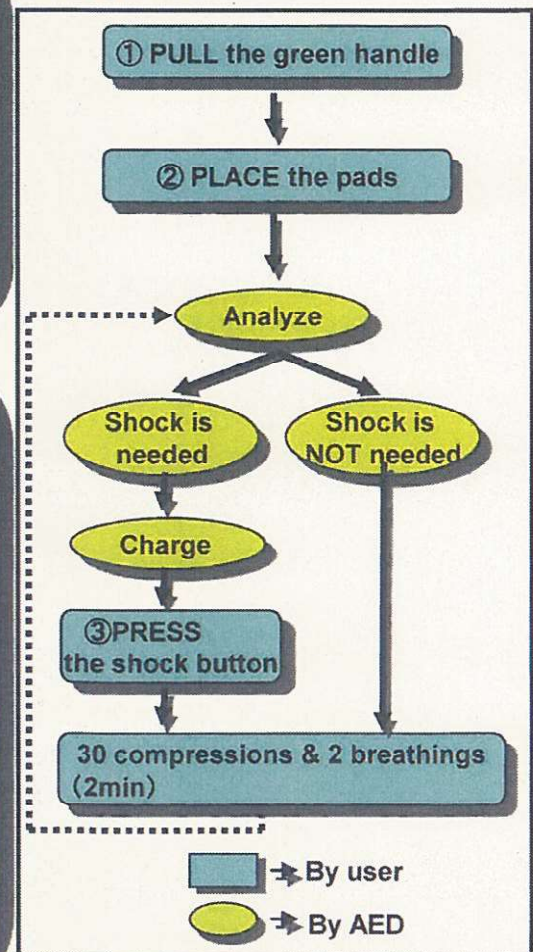


※ According to JRC G2010, if the victim is preschooler, use the Infant/Child pads.(Option)

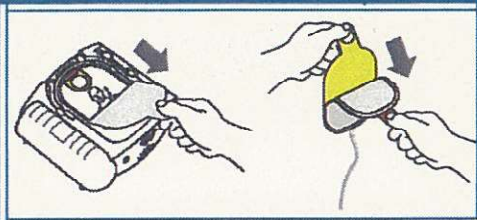


"Begin by removing clothing patients chest, cut clothing if needed."

Overview



2 PLACE the pads on the patient's bare skin



AED begins analyzing the heart rhythm after the pads are attached to the patient

"Do not touch the patient. Analyzing."

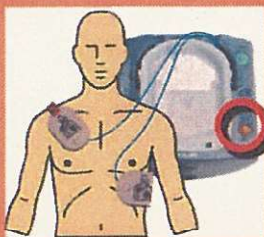
If a shock is needed

If a shock is NOT needed

"Shock advised,
Stay clear of patient"

"Shock not advised"
"Be sure EMS have been called"
"It is safe to touch the patient"
"Begin CPR"

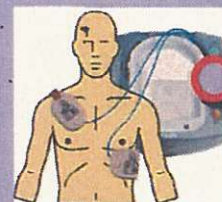
3 PRESS the flashing orange Shock button.



SHOCK



"Press the flashing orange"
"Shock delivered"
"Be sure EMS have been called"
"It is safe to touch the patient"
"Begin CPR."
"For help with CPR, press blue."



Start CPR in 2 min.(Cycles of 30 compressions and 2 breathings)

※ If you cannot do artificial breathing, continue compressions.



※ Leave AED on until EMS arrive !
Do not remove the pads from the patient !