

A I Z U

THE UNIVERSITY OF AIZU

会津大学

A Top Global University in Japan



Why The University of Aizu?

- Type: Public University
- Established: 1993
- Solely dedicated to
**Computer Science and
Engineering**



- Goal: foster experts in computer science and engineering who are able to be active in the world.

**You will become a
global ICT engineer!**

Features of The University of Aizu

1. SAFE & INTERESTING
2. ADVANCED
3. GLOBAL
4. COST-EFFECTIVE



1. SAFE Place to Live

AIZU

THE UNIVERSITY OF AIZU



1. SAFE Food & INTERESTING Culture



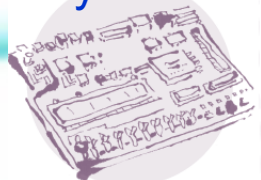
2. ADVANCED Education

2022 Rank



- 13th in Japan among 184 Japanese Universities
- In CS field, 7th in Japan and 301-400th in the world!

System Design



システム設計

この分野に関するのは、
P19[情報 算 研究室]

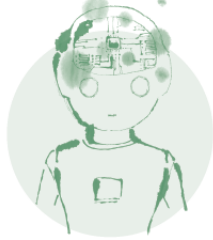
Robotics



ロボット

この分野に関するのは、
P24[ARC-Robot]

AI



知能システム

この分野に関するのは、
P20[経 理 学 研究室]

Biomedical



医療

この分野に関するのは、
P24[ARC-BME]

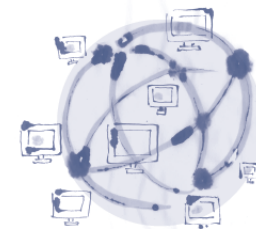
Art



芸術

この分野に関するのは、
P22[Michael Cohen 研究室]

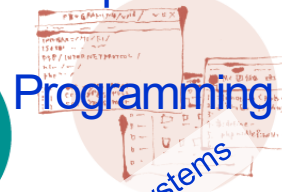
Network



ネットワーク

この分野に関するのは、
P20[前 書 研究室]

Space



宇宙

この分野に関するのは、
P23[ARC-Space]

Field

コンピュータ
理工学の
フィールド

Programming



プログラミング

この分野に関するのは、
P19[渡部 有隆 研究室]

* Embedded Systems

* Modeling

* Economics

* Cloud

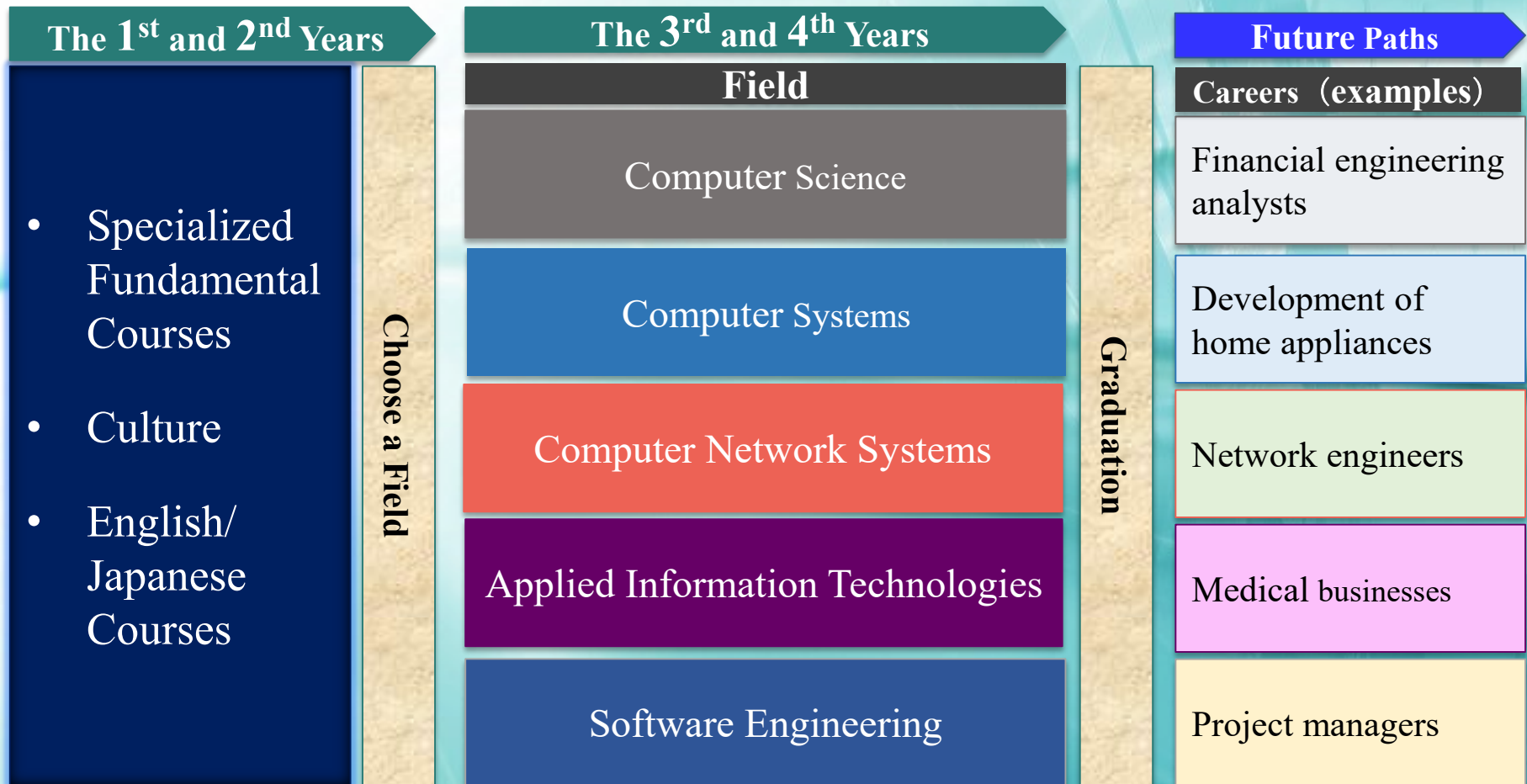
* Speech Recognition

and more...

会 津 大 学

2. ADVANCED Curriculum Design

- The curriculum is comprised of **5** Fields (specialized fields)
- Students can take courses in relevant specialized fields according to their future Paths
- From admission to graduation, students are fully supported by advisors

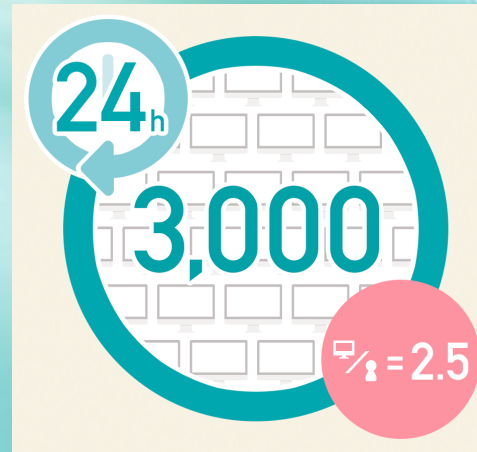
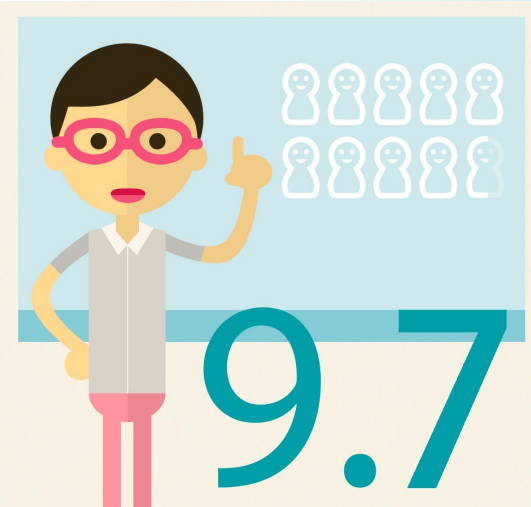


2. ADVANCED Learning Environment

Curriculum follows worldwide standard



Machines are replaced every 3 years

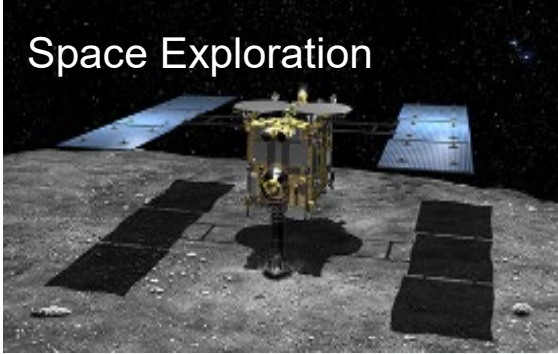


- Around 3,000 computer terminals on campus;
- 2.5 computers per student
- Available 24/7

The student-faculty ratio at the University of Aizu is less than 10:1 (the Japanese national average: over 20:1)

2. ADVANCED Research

Space Exploration



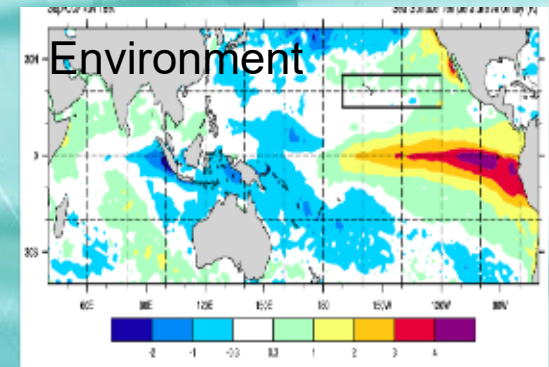
Robotics



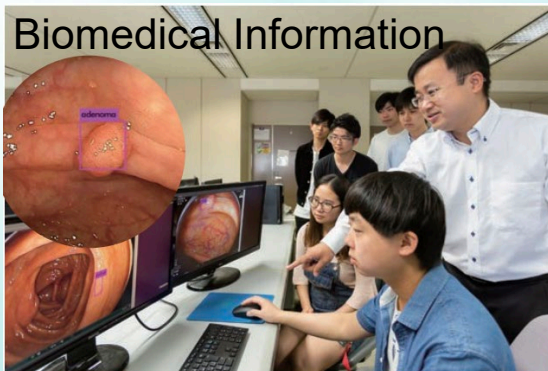
Big Data



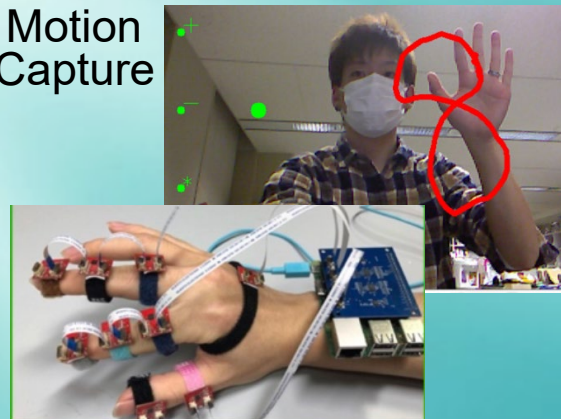
Environment



Biomedical Information



Motion Capture



IoT



2. ADVANCED Programs

Venture Start-up Factories



Start-up Support



Programming Competitions



Class Projects



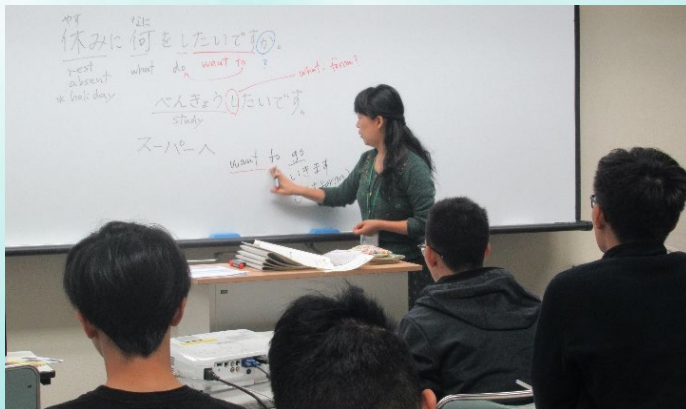
3. GLOBAL Education

Our curriculum follows the worldwide standard for computer science:
ACM/IEEE-CS Computer Science Curricula



English-medium Instruction

- Lectures and research instruction are conducted entirely in English
- Thesis must be written in English
- Two-year capstone research training



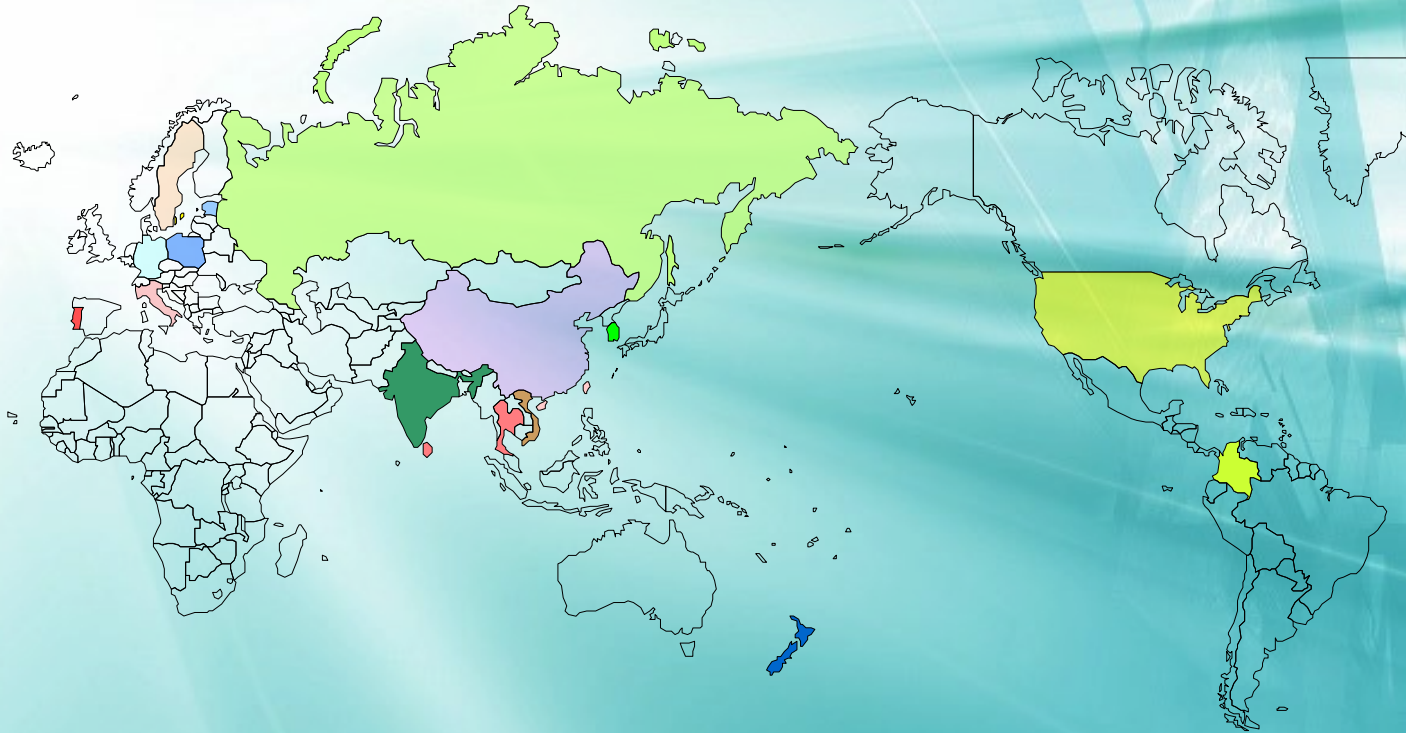
Japanese Language Education

- Beginner level to business level
- JLPT N5~N1 training
- Job-hunting training

3. GLOBAL Cooperation

The University of Aizu has had collaborations with **100** universities and institutes in **25** countries and areas.

Special programs: UG 2+2, DDP, Master's 1+1, Global 3+2, Overseas bases



3. GLOBAL Events

Internships



Events

Over 160 International students from 21 countries



4. Rich Support for Students

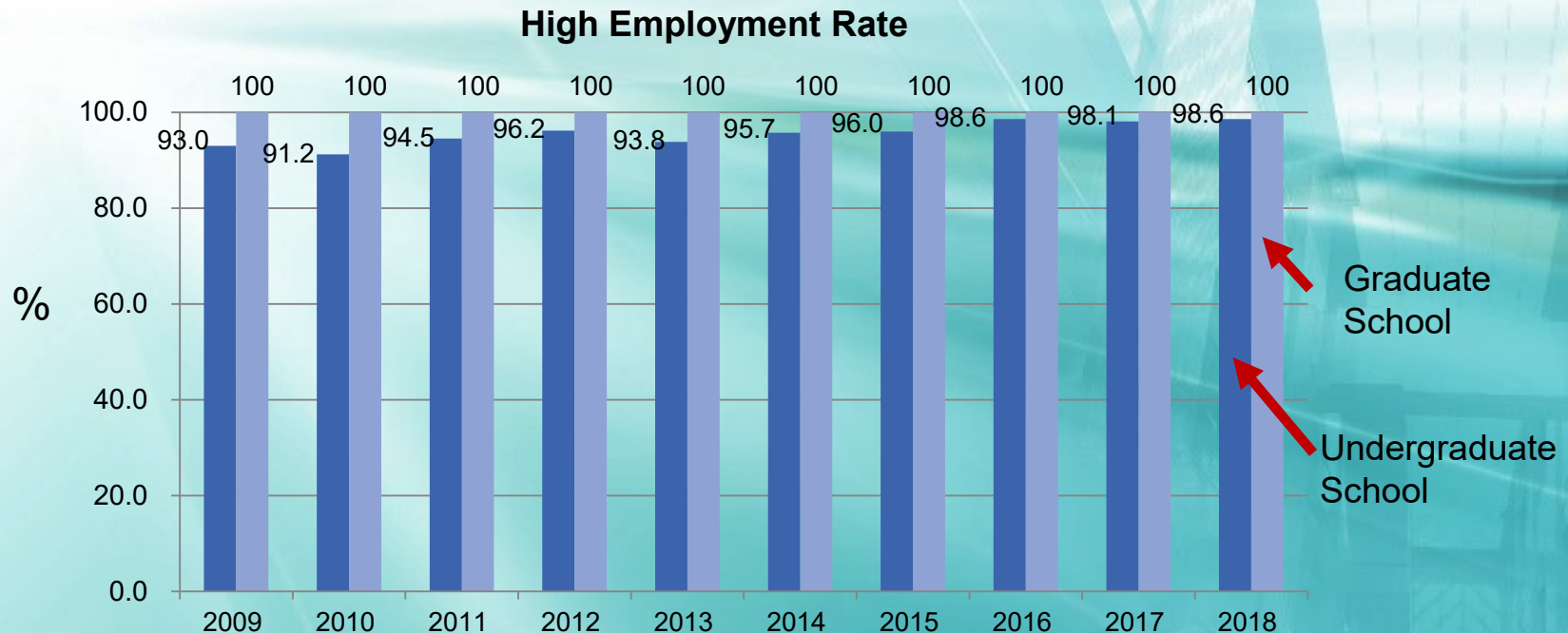
■ Class Mentor System

- University faculty and staff support your study and life from 1st year

■ Buddy Program

- Japanese students become your buddies to help you

■ Robust Career Support



4. Rich Campus Life

■ Campus Life



4. COST-EFFECTIVE University

■ Fees

- Tuition: ¥520,800 (\doteq US\$4,687 / year)
- Living: ¥700,000 (\doteq US\$6,299 / year)

■ Scholarship

- MEXT Scholarship
- MEXT Honors Scholarship
- Rotary Yoneyama Scholarship
- SAISUA Scholarship

(Support Association for International Students of the Univ. of Aizu)



How to Apply

■ Important Dates

- Application Period: Jan. ~ Feb. 2023
- Enrollment Date: Oct. 1, 2023

■ Required Documents

□ Prepared by yourself

- Application Form
- Certificate of English Proficiency (i.e. TOEFL-iBT, IELTS, TOEIC)
- Certificate of Academic Scores (i.e. ACT, IB, A-Level, AP, Indian Class XII)
- Statement of Financial Support and Proof of Assets
- Passport or Residence Card

□ Prepared by your school

- School Transcript
- Certificate of Expected Graduation
- Letter of Recommendation

■ Contact: **sgu-admission@u-aizu.ac.jp**

